

LOCAL MARINE NOTICE IS FOR THE INFORMATION OF SHIP'S MASTERS AND OTHER CONCERNED PARTIES

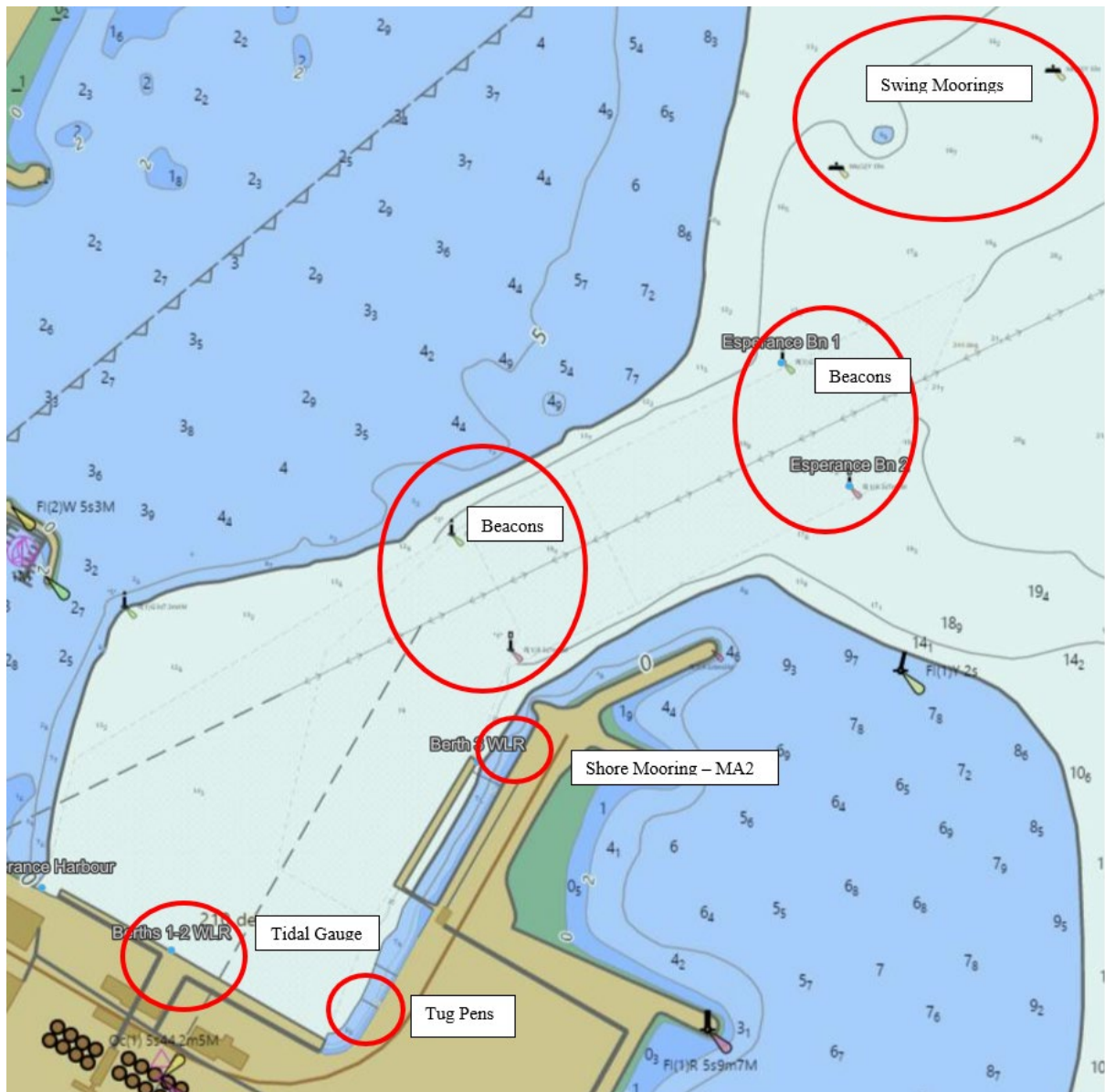
Diving Operations – Port of Esperance

Number: 05/2025(T)	Date: 23/09/2025
Date of Effect:	23/09/2025
Details:	Port of Esperance Diving Operations
Former Notice:	NIL
Charts & Publications:	AUS 119/ ENC AU5119P1
Further Notice:	Nil - Will be cancelled at the end of works
Attachments:	Tabel and Chart-let

Port users are advised that navigational aids and marine equipment is being refurbished as per below table and chart-let, commencing on 23/09/2025 and expected to continue for two weeks.

Vessel - SEND IT - will be engaged in diving operations and shall display lights and day shapes as required for Collision regulations. The works will be conducted in daylight hours only and all mariners are advised to maintain an exclusion zone of 50m . The vessel will be monitoring VHF:12 and 16

Name	Latitude	Longitude	Colour	Work
Beacon 1	33° 51.80' S	121° 54.53' E	Green	Maintenance
Beacon 2	33° 51.91' S	121° 54.60' E	Red	Maintenance
Swing Mooring 1	33° 51.65' S	121° 54.58' E	Yellow	Maintenance
Swing Mooring 2	33° 51.57' S	121° 54.80' E	Yellow	Maintenance
Shore Mooring MA-2	33° 52.12' S	121° 54.27' E	N/A	Maintenance
Berth 1 Tidal Gauge	33° 52.30' S	121° 53.95' E	N/A	Maintenance
Tug Pens	33° 52.32' S	121° 54.13' E	N/A	Maintenance



PLANT SPECIFICATION – SWM “SEND IT”



HULL:

ALUMINIUM PLATE

CLASSIFICATION:

Vessel Type: Centre Console
Survey Type: 2C

Vessel Name: “Send It”
Vessel ID: 457754

DIMENSIONS:

Overall Length: 7.89m
Beam: 2.49m

Gross Weight: 1.883T
Draft: .05M

CAPACITIES:

Motor: 2 x 200HP
Speed: 40 Knots
Pax: 6 – Determined by Life raft
Additional Weight: 2200kg

Yours sincerely

Captain Murali Krishna
Harbour Master
Southern Ports